



Centre hospitalier affilié
universitaire

A University-Affiliated
Hospital Centre

ST. MARY'S HOSPITAL CENTER

ANNUAL REPORT ON RESEARCH

**For the period of
April 1, 2008 – March 31, 2009**

**Prepared by the
Department of Clinical Epidemiology
and Community Studies**

October 28, 2009

FONDATION DE
L'HÔPITAL
ST. MARY



ST. MARY'S
HOSPITAL
FOUNDATION



McGill

TABLE OF CONTENTS

A MESSAGE FROM THE HEAD, DCECS	2
1 RESEARCH ADMINISTRATION	3
1.1 Department of Clinical Epidemiology and Community Studies (DCECS)	3
1.1.2 Staff.....	4
1.1.3 Research Review Office	5
1.2 Scientific Research Committee.....	5
1.3 Research Ethics Committee	6
1.4 Financial report	6
2 RESEARCH ACTIVITIES	7
2.1 Research themes.....	7
2.2 Summary of research publications	8
2.3 Summary of new research grants.....	8
3 ACTIVITIES TO SUPPORT RESEARCH	9
3.1 DCECS website	9
3.2 Research consultation.....	9
3.3 Coordination with quality management.....	9
3.4 Annual Research and Quality of Care Symposium	9
3.5 DCECS seminar series	10
3.6 Research trainees.....	10
4 RESEARCH DEVELOPMENT AT ST. MARY'S HOSPITAL CENTER.....	11

APPENDICES

A ASSOCIATE MEMBERSHIP DCECS	13
B ACTIVE RESEARCH PROTOCOLS AT SMHC	14
C RESEARCH PERSONNEL.....	23
D SCIENTIFIC RESEARCH COMMITTEE.....	24
E RESEARCH ETHICS COMMITTEE.....	25
F RESEARCH EXPENDITURES – PAST 5 YEARS	26
G SMHC PUBLICATIONS AND PRESENTATIONS.....	27
H SNAPSHOT OF DCECS WEBSITE HOMEPAGE	31
I ANNUAL RESEARCH CONSULTATION REPORT	32
J DCECS RESEARCH SEMINARS.....	35
K ANNUAL RESEARCH AND QUALITY OF CARE SYMPOSIUM PLANNING COMMITTEE.....	37
L 9 TH ANNUAL RESEARCH AND QUALITY OF CARE SYMPOSIUM – PROGRAM OF EVENTS....	38

**A MESSAGE FROM THE HEAD,
DEPARTMENT OF CLINICAL EPIDEMIOLOGY AND COMMUNITY STUDIES**



This report provides a summary of the main research activities and accomplishments of St. Mary's Hospital Center, from April 1, 2008 to March 31, 2009. The report is organized into 4 sections: 1) administration and funding of research; 2) current research activities (themes, grants, publications); 3) activities to support research (consultation and education); and 4) research development.

A major focus this year was on research development, in line with our recent *Centre hospitalier affilié universitaire* (CHAU) status. Notable activities included: strategic planning on research goals, development of a business plan, and plans for recruitment of two endowed chairs (see section 4.1). A new pilot project competition was created, called C.A.R.E. (Competition Attracting Research Excellence) (see section 1.2)

After years of planning and preparation, the Board of Directors made a formal request this year for the St. Mary's Hospital Research Ethics Committee to be formally designated under Article 21 of the Civil Code of Quebec. This status will allow the Committee to review, approve, and monitor research protocols involving minors or incompetent adults. As the designation was granted in the 2009-10 year, further details will be provided in next year's annual report.

Finally, I would like to acknowledge the substantial, continued financial support for research from the SMHC Foundation. Clearly, without this support we would not have been able to achieve our CHAU status, or to contemplate the expansion of research required to meet the criteria for full CHAU designation. I would also like to acknowledge the assistance of Zahoor Chughtai, DCECS Administrative Coordinator, Christine Gagné, Department Secretary, and Sarah Norton, Research Administrative Secretary, in preparing this report. In an effort to report on St. Mary's research activities in the best way possible, we always welcome any comments and suggestions on this report.

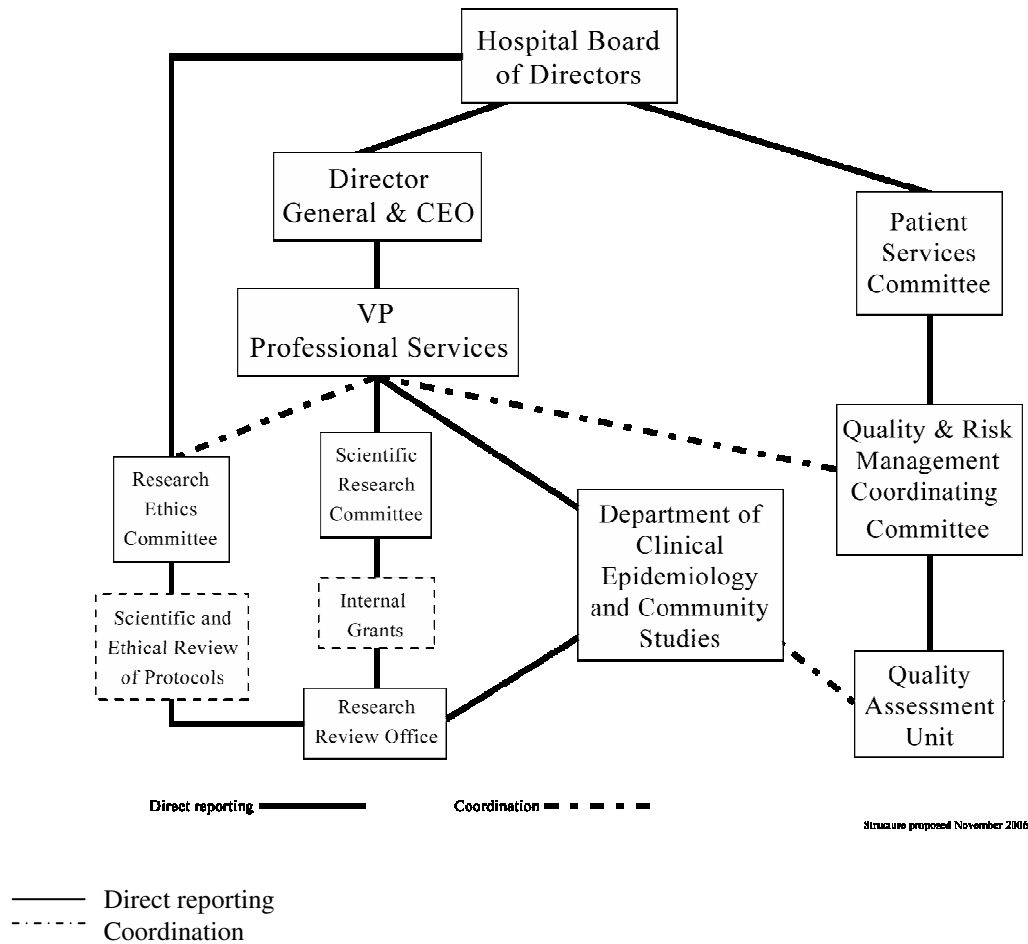
Jane McCusker, MD, DrPH,
Head, Department of Clinical Epidemiology and Community Studies, St. Mary's Hospital Center,
Professor, Department of Epidemiology, Biostatistics, and Occupational Health, McGill University.

1. RESEARCH ADMINISTRATION

This section describes the activities during 2008-09 of the main bodies that are responsible for research administration at St. Mary's, including the Department of Clinical Epidemiology and Community Studies (section 1.1), the Scientific Research Committee (section 1.2), and the Research Ethics Committee (section 1.3). The section ends with a summary financial report for research (section 1.4).

The figure below shows the organigram for research at St. Mary's.

Organigram showing research-related structures at St. Mary's Hospital



1.1. Department of Clinical Epidemiology and Community Studies (DCECS)

Research at St. Mary's Hospital continued to be coordinated and supported through the DCECS, principally through its Research Review Office, and through the provision of administrative support to the Hospital's two research committees: the Scientific Research Committee, and the Research Ethics Committee. The DCECS also plays a major role in conducting and supporting research at the hospital (see sections 2 and 3). The DCECS is one of several hospital-based clinical epidemiology units linked to the Department of Epidemiology and Biostatistics at McGill University.

1.1.2. Staff

In 2008-09, St. Mary's Hospital research personnel comprised of 31 staff members, with 9 members supported by research grants, 8 supported by the DCECS, and 14 supported by a mix of research grants and DCECS funds (see appendix C).

Scientific staff:

- **Department Head** directs all department activities, chairs the Scientific Research Committee (section 1.2), and functions as an investigator on selected projects.
- **Consultant PhD Biostatistician** (0.2 FTE) collaborates on funded research projects in the DCECS; consults with Hospital staff on research and quality assessment activities on study design and analysis; assists in the preparation of collaborative grant proposals; functions as an investigator on selected projects; and supervises the DCECS Master's level Statisticians.
- **Consultant PhD Epidemiologist** (0.2 FTE) provides research consultation in the Hospital, coordinates the DCECS seminar series, helps with planning the Annual Research and Quality of Care Symposium, and functions as an investigator on selected projects.
- **MSc-level Biostatisticians** provide statistical consultation and analysis under the supervision of the Consultant PhD Biostatistician.

Administrative staff:

- **Department Administrative Coordinator** (full-time) is responsible for supervision of secretarial staff, human resources management, financial management, budget preparation and monitoring, and space and equipment management.
- **Department Secretary** (full-time) is responsible for day-to-day secretarial activities of the Department, as well as for assisting Hospital investigators in submitting grant applications and manuscripts for publication.
- **Research Secretary** assists Hospital investigators in the preparation of grant proposals and manuscripts for publication, and maintains and organizes the Department's bibliographic database.
- **Research Administrative Secretary** (full-time) is responsible for coordinating the review (ethical, scientific, administrative) of research protocols, and is also responsible for duties related to the Scientific Research Committee and Research Ethics Committee.
- **Clerical Assistant** assists the Department Administrative Coordinator and secretarial staff with clerical duties.

Research staff:

Project Coordinators generally assist principal investigators of funded research projects with various organizational aspects, including communication with collaborators and partners, knowledge translation activities, coordination of project staff, and the organization of regular meetings and special conferences.

Research Assistants typically work on funded research projects, and assist in data collection, analysis, and/or reporting of results.

DCECS Associate members

Associate members of the DCECS are individuals from within or outside the SMHC community who make significant contributions to the research mandate of the Hospital, either by leading or collaborating on Hospital research activities, or by helping to develop research at the Hospital. Associate members also contribute to research educational activities at the Hospital. Please refer to Appendix A for a list of the 11 individuals who are currently appointed as Associate members.

1.1.3. Research Review Office

Research protocol review and monitoring at the Hospital continued to be coordinated through the Research Review Office of the DCECS. A total of 47 new protocols were reviewed (either full or expedited review), of which 45 were approved in 2008-09. There were a total of 103 active protocols at St. Mary's Hospital Center during 2008-09 (see Appendix B). Please note that this list of protocols does not include all of the McGill Oncology protocols that are reviewed and monitored by the McGill Institutional Review Board (IRB) under an IRB authorization agreement. As a result of discussions with the McGill Clinical Research Program, and the Department of Oncology at St. Mary's, an agreement was reached in December of 2008 stipulating that all McGill Oncology protocols will be registered with the Research Review Office, and reviewed by the Research Ethics Committee in an expedited manner.

Aspects of protocol review included: scientific, ethical, financial, and human resources, as described below.

- **Scientific and ethical review and monitoring** were conducted by the Research Ethics Committee (see 1.3 below).
- **Financial review and monitoring** were conducted by the DCECS Administrative Coordinator, in collaboration with the Hospital's Finance Department, for protocols for which funding was held at St. Mary's (and in some cases with McGill University). Financial approval of protocols requires approval of a protocol budget. Approved protocols are assigned a cost center. Financial monitoring is accomplished through periodic statements that are distributed to Principal Investigators for their approval.
- **Human resources review and monitoring** were conducted by the DCECS Administrative Coordinator, in collaboration with the Hospital's Department of Human Resources. Please refer to Appendix C for a complete list of St. Mary's research personnel who held active appointments in 2008-09. 24 research personnel occupied office space in the DCECS alone, while the remainder worked on research studies in other areas of the Hospital, or at various external research sites.

1.2. Scientific Research Committee

The Scientific Research Committee (SRC) continued to provide guidance and oversight for all research activities, policies and procedures, and development plans for St. Mary's Hospital Center. The SRC, chaired by Dr. Jane McCusker, met 9 times during 2008-09. SRC membership for 2008-09 is listed in Appendix D. Some notable activities of the SRC during 2008-09 are described below, as well as in section 4.

- **Administration of the SMHC Internal Research Grants program** This program has now been replaced with the Annual C.A.R.E. competition (see below). The last project to be funded under the Internal Grant program was to Dr. Maida Sewitch, Department of Epidemiology, for her project entitled: "Use of complementary and alternative medicine in cancer patients". Her project was funded on June 4, 2008 for an amount of \$5,000.
- **CARE competition** As the development of high quality research is one of the Hospital's top priorities, guidelines were created for an annual Hospital-wide "Competition Attracting Research Excellence (C.A.R.E.)". The aim of C.A.R.E. is to support pilot projects that contribute towards the development of research at SMHC, and that result in an increased amount of external research funding received by the Hospital, and peer-reviewed publications. This competition replaces the Internal Research Grants program.

Applications are first reviewed by the SRC for investigator and project eligibility. Projects meeting the eligibility review criteria are then forwarded to the C.A.R.E. Review Committee for an in-depth scientific review. C.A.R.E. Review Committee recommendations are then submitted to the SRC for a final decision.

The first annual 2008-09 C.A.R.E. competition resulted in the funding of two applicants:

- Dr. Maida Sewitch (Associate Member, Department of Epidemiology). Her project will address the views of family medicine patients and physicians regarding complementary and alternative medicine. This project was funded on January 26, 2009 for an amount of \$16,000.
- Dr. Zita Kruszewski (Clinical and Research Ethicist, St. Mary's Hospital). Her project will examine the informed consent process in order to determine what research participants understand, and where improvements can be made. This project was funded on March 23, 2009 for an amount of \$16,000.
- **Designation of Research Ethics Committee** Work continued on revising the St. Mary's Hospital Center Regulatory Framework with the aim of obtaining formal designation of the SMHC Research Ethics Committee under Article 21 of the Civil Code of Quebec, allowing the Committee to review, approve, and monitor projects involving minors and incompetent adults. Revisions were made to the Framework in order to incorporate new Ministry requirements regarding the research ethics review of protocols. The Framework was then presented to the SMHC Board of Directors for approval in March of 2009. New Ministry requirements currently not in compliance were also presented to the Board along with a timeframe for their implementation at SMHC.
- **McGill oncology trials** Discussions took place between key members of research at SMHC, as well as the Department of Oncology, in order to develop policies and procedures on the registration and review of research protocols coordinated by the McGill Clinical Research Program and the SMHC Department of Oncology. As of December of 2008, all McGill oncology protocols will be registered and reviewed at the Research Review Office.

1.3. Research Ethics Committee

The Research Ethics Committee (REC) met 11 times from April 1, 2008, to March 31, 2009. The REC was chaired by Dr. Michael Bonnycastle. REC membership for 2008-09 is listed in Appendix E.

Protocol review: The REC reviewed 47 new protocols, 60 project amendments, 43 renewal requests, and 25 termination reports. 4 protocols reported serious adverse events, and 4 protocols reported safety updates.

Continuing education: The REC continued to participate and hold educational activities, including an ethics journal club that meets every 3 months to discuss case studies. Some members also attended/participated at seminars related to research ethics. For more information, please refer to the 2008-09 REC Annual Report (copy available in the Research Review Office).

Research misconduct: There were no reported cases of research misconduct in 2008-09, as reported in the 2008-09 REC Annual Report (copy available in the Research Review Office).

1.4 Financial report

Research expenditures for 2008-09 amounted to a total of \$753,176 (see Appendix F). Please note that while this table shows the total amount of expenditures broken down by category of funding, it does not show the total amount of funds received as revenue for 2008-09.

Approximately 60% (\$455,525) of research expenditures during 2008-09 were for infrastructure (primarily to support salaries of DCECS staff to conduct the activities described in sections 1, 3, and 4 of this report). The remaining 40% (\$297,651) was spent to support specific research projects described in section 2. A very high proportion of these latter expenditures (83%) were derived from external grants, with the balance made up by internal grants supported from a pool of funds derived from the indirect costs of privately-funded research (7%), and by specific targeted research projects funded by the SMHC Foundation (10%). It is important to note that there was a 74% increase in expenditures derived from internal grants from 2007-08 to 2008-09.

2. RESEARCH ACTIVITIES

This section describes the main research activities (including grants and publications) during the 2008-09 year. Please refer to Appendix B for a report on research projects active at St. Mary's Hospital Center.

2.1 Research themes

Research at St. Mary's continued to focus on clinical epidemiology and health services research. Established areas of research are in the mental health of seniors and emergency department services. Hospital staff also continued to conduct clinical research (including clinical trials), quality improvement research, and family medicine research. Research in nursing and integrative medicine are emerging themes. Selected research activities and publications under these broad themes are described briefly below.

Mental health of seniors Dr. Mark Yaffe obtained an external grant from Human Resources and Skills Development Canada – New Horizons for Seniors Program – to conduct a study on improving seniors' awareness of elder abuse (project 08-04 - Appendix B). Dr. Jane McCusker obtained a grant from the Canadian Institutes of Health Research to conduct a study on the implementation of chronic care management for late life depression in primary care (project 08-20 - Appendix B). This project involved stakeholders from Quebec and Ontario in the development of a research grant application to the Partnerships for Health Improvement program of the Canadian Institutes of Health Research. Drs. Martin Cole and Jane McCusker continued work on a study of delirium in nursing homes funded by the Canadian Institutes of Health Research, the Alzheimer Society of Canada, the Gustav Levinschi Foundation, and the Fondation Hôpital Enfant Jésus (projects 05-09, 06-08, 08-24, and 08-38 - Appendix B). Drs. Cole and McCusker published several articles based on their work on outcomes of delirium and depression in older medical inpatients.. Drs. Martin Cole, Maida Sewitch, and Jane McCusker published 2 articles on their study of mental health services use among Canadian seniors with depression.

Emergency department research Dr. Jane McCusker continued work on an FRSQ-funded investigation into the determinants of emergency department utilization in Quebec (protocol 07-14, Appendix B). She also obtained funding from the North Bay General Hospital to support the dissemination of the ISAR (Identification of Seniors at Risk) clinical tool used to identify seniors at risk in the emergency department (project 08-23 - Appendix B). DCECS staff assisted a student trainee in publishing results regarding comorbidity information at an emergency department visit, comparing self-reporting and administrative data.

Family medicine research Dr. Mark Yaffe continued his work on physician identification of elder abuse, publishing an article on the Elder Abuse Suspicion Index, and presenting at various conferences on this topic. Dr. Ellen Rosenberg published an article on the role of professional and family interpreters. Dr. Laura Haiek continued her research on the Baby-Friendly Initiative (project 07-06 - Appendix B). Dr. Balbina Russillo published a paper on the success rates of vaginal delivery after cesarean section (VBAC), in collaboration with Dr. Maida Sewitch and Linda Cardinal.

Nursing research Dr. Antonia Arnaert continued her work on her SMHC Foundation-funded telehomecare program, producing various research protocols studying the development and evaluation of telehomecare for cancer patients (projects 08-11, 08-16, 08-29, and 08-35 - Appendix B). Dr. Arnaert also supervised two McGill University Nursing students on projects related to telehomecare (projects 08-12 and 08-13 - Appendix B)

Integrative medicine research Dr. Maida Sewitch continued to develop research on the use of complementary and alternative medicine in cancer patients (project 08-14 - Appendix B). Dr. Sewitch was also awarded a \$16,000 grant from the SMHC C.A.R.E. competition for her study entitled: "Discussion of complementary and alternative medicine for cancer in mainstream health: perspectives of family medicine patients and physicians". DCECS staff, as well as a PhD student trainee also consulted with Dr. Robert Hemmings on a meta-analysis of the effect of black cohosh for the treatment of postmenopausal symptoms (consultation OBS07-01 - Appendix I). As a result of this work, an article was submitted to and accepted by the Journal of Alternative Therapies.

Quality improvement research DCECS and Quality Assessment staff assisted Ms. France Desjardins in publishing an article regarding a time and motion study on the reorganization of nursing work on surgical units at SMHC.

Clinical research St. Mary's Hospital Center investigators were active in multi-center clinical trials. Four new grants were awarded to Dr. Susan Solymoss for clinical trials in hematology (projects 08-02, 08-22, 08-31, and 08-33 - Appendix B), and two new grants were awarded to Dr. Paul Ahlgren for clinical trials in oncology (projects B-40 and B-41 - Appendix B). Drs. Armand Zini and Jason Boman published a meta-analysis on sperm DNA damage and pregnancy loss, in collaboration with Eric Belzile and Dr. Antonio Ciampi.

2.2 Summary of research publications

During the calendar year of 2008, St. Mary's Hospital investigators published 22 articles in peer-reviewed journals, and 4 other journal articles. There were also 15 presentations at scientific meetings (please refer to Appendix G for a report of Hospital publications and presentations). It should be noted that this report is based on responses received from an annual request to St. Mary's researchers to submit details of publications and presentations, and may not be complete.

2.3 Summary of new research grants

During the 2008-09 financial year, 15 new grants were received by SMHC investigators, of which 2 were from internal grants, and 13 were from external funding bodies, as summarized below.

Investigator	Protocol # and title	Funding body	Internal/ External	Amount received by SMHC
Arnaert, Antonia	07-22 – The development and evaluation of a tele-homecare model for palliative patients and their families	SMHC Foundation	Internal	\$250,000
Solymoss, Susan	08-02 – A phase III, randomized, parallel group efficacy superiority study in hospitalized medically ill patients comparing rivaroxaban with enoxaparin	Bayer	External	\$10,667/patient
Yaffe, Mark	08-04 – Improving seniors awareness of elder abuse through the self-administration of the Elder Abuse Suspicion Index	Human Resources Skills Development Canada	External	\$17,754
McCusker, Jane	08-08 – Requête web opératoire	Ministère de la santé et des services sociaux	External	\$15,860
Sewitch, Maida	08-14 – Use of complementary and alternative medicine in cancer patients	Internal Grant	Internal	\$5,000
Morelli, Gaetano	08-19 – Management of Canadian. Patients with Non Variceal Upper Gastrointestinal Bleeding. A national cluster randomized trial	Canadian Institutes of Health Research	External	\$11,212
McCusker, Jane	08-20 – Implementation of chronic care management for late life depression in primary care.	Canadian Institutes of Health Research	External	\$20,000
Solymoss, Susan	08-22 – A multinational, multicenter, randomized, double-blind study comparing the efficacy and safety of AVE5026 with enoxaparin for the prevention of venous thromboembolism in patients undergoing elective total hip replacement surgery.	Sanofi Aventis	External	\$8,684/patient
McCusker, Jane	08-23 – ISAR/SEISAR Implementation Support	North Bay General Hospital	External	\$6,000
Cole, Martin	08-24 – Delirium in long-term care settings-statistical analysis	Gustav Levinschi Foundation	External	\$10,000
Solymoss, Susan	08-31 – RECOVER II safety of oral dabigatran etexilate compared to warfarin	Boehringer Ingelheim	External	\$15,372.50/patient
Solymoss, Susan	08-33 – Comparing the efficacy and safety of AVE5026 with enoxaparin for the prevention of venous thromboembolism in patients undergoing elective knee replacement surgery	Sanofi Aventis	External	\$8,684/patient
Voyer, Phillippe	08-38 – Détection du delirium chez les aînés	Fondation Hospital Enfant Jesus	External	\$4,288
Ahlgren, Paul	B-40 – Trial of neoadjuvant therapy in patients with breast cancer evaluating adding capecitabine or gemcitabine to docetaxel	National Surgical Adjuvant Breast and Bowel Project	External	\$8,050/patient
Ahlgren, Paul	B-41 – A randomized phase III trial of neoadjuvant therapy for patients with palpable and operable HER2-positive breast cancer comparing the combination of trastuzumab plus lapatinib to trastuzumab and to lapatinib administered with weekly paclitaxel following AC accompanied by correlative science studies to identify predictors of pathologic complete response	National Surgical Adjuvant Breast and Bowel Project	External	\$5,200/patient

3. ACTIVITIES TO SUPPORT RESEARCH

Support for research at SMHC is provided by the Department of Clinical Epidemiology and Community Studies (DCECS), and includes: epidemiological and biostatistical consultation on research to Hospital staff, support of quality assessment studies, the annual Research and Quality of Care Symposium, an educational program of seminars and workshops, and supervision of research trainees.

3.1. DCECS website

The DCECS website continued to be improved in an effort to showcase various research aspects at St. Mary's Hospital. Although the website is currently undergoing development, you can visit the website at: <http://www.smhc.qc.ca/Epidemiology/index.html>. The DCECS website can also be accessed via the St. Mary's Hospital website's homepage by clicking on the icon labelled "Research @ St. Mary's Hospital", located at the bottom of the homepage. Appendix H shows a portion of the website.

In September 2008, guidelines were developed to organize a section of the website into various research themes, allowing people to access information on the kind of research conducted by the Hospital. Each theme describes the area of research, lists some of the St. Mary's investigators involved, as well as a primary theme contact person, and also provides access to various reports, summaries, and other dissemination tools for each project in the theme.

3.2. Research consultation

At the request of the Scientific Research Committee, a more detailed report on consultation/collaboration was prepared in order to increase the accountability and transparency of the allocation of the DCECS budget towards these activities. In addition, the new reporting format categorized the types of consultation provided to SMHC staff, including assistance in preparing grant proposals and manuscripts. Between April 1, 2008 and March 31, 2009, Department staff consulted or collaborated on 15 different projects in 9 Hospital departments. 6 of these consultations subsequently led to articles being accepted or published in journals. Please refer to Appendix I for a detailed list of consultations for 2008-09.

3.3. Coordination with quality management

Dr. McCusker continued to direct the Quality Assessment unit this year, and to coordinate the activities of the Quality Assessment Unit with other research at St. Mary's Hospital. The activities of the Quality Assessment Unit during the 2008-2009 financial year are described in a separate report.

3.4. Annual Research and Quality of Care Symposium

In an effort to highlight research at the Hospital, including both scientific research and quality assessment studies, the DCECS co-sponsored, with the Quality Management Unit, the Hospital's 9th Annual Research and Quality of Care Symposium, held on November 19th, 2008. The theme of the Symposium was "The challenges of interprofessional practice". For a summary of the program, please refer to Appendix L.

A total of 135 people attended the Symposium, of whom 55 were from outside of St. Mary's Hospital. 32 abstracts were submitted for awards. 32 poster presentations were made, including 28 Quality Assessment posters, and 4 posters in research.

The Annual Symposium Planning Committee members are listed in Appendix K. Their time and effort helped to make the 9th Annual Symposium a remarkable success.

3.5. DCECS seminar series

The Department continued to offer research seminars to Hospital staff approximately twice a month. The topics addressed during the 12 seminars, presented between April 1, 2008 and March 31, 2009, are listed in Appendix J.

3.6. Research trainees

The following list includes university trainees who were affiliated with the DCECS between April 1, 2008 and March 31, 2009:

Students	Type	University	Supervisor	Term
Waleed Alessa	MD fellow	McGill University	Jane McCusker, MD, DrPH	April 2008 –
Stephanie Susser	Medical student	McGill University	Jane McCusker, MD, DrPH	April 2005 –
Ming Vu	MD fellow	Université de Montréal	Jane McCusker, MD, DrPH	April 2005 –
Maninder Setia	PhD student	McGill University	N/A*	April 2007 –
Nicole Rigillo	MA student	Concordia University	N/A*	April 2007 –
Sophia Bachilova	BSc student	McGill University	N/A*	January 2008 –

* N/A denotes a student hired on contract as a Research Assistant in the DCECS, and whose work was not related to her/his thesis or other academic curriculum

4. RESEARCH DEVELOPMENT AT ST. MARY'S HOSPITAL CENTER

In April of 2008, St. Mary's Hospital Center was conditionally designated by the MSSS as *Centre hospitalier affilié universitaire (CHAU)*, on condition that the Hospital obtains an FRSQ *groupe de recherche* grant or similar governmental (federal or provincial) research grant. The MSSS has requested that this condition be met by June 2011 (or no later than June 2013). Meeting this condition requires the selection of one or more coherent themes to guide research, an increase in research capacity, and further development of an administrative infrastructure.

Regarding the selection of research themes, members of the Scientific Research Committee consulted with senior administrators at the Research Institute of the McGill University Health Centre, and also sought input from hospital researchers at a meeting held on September 11, 2008. The main themes suggested emphasized health services research on the interface between primary and secondary care, the management of chronic illnesses and comorbidity, and patient-centered care. Consensus was achieved on a theme of applied clinical and health services research focusing on primary care and the management of complex, co-morbid patients. This theme is consistent with the mandate of the hospital and the expressed interest of the MSSS in the role that St. Mary's can play in the training of primary care providers. This theme would build upon: 1) existing research strengths at the hospital in collaborative care in psychogeriatrics and family medicine (e.g., the management of late-life depression), in emergency department care and outcomes of older patients, and in family caregiver issues; 2) emerging research on telehealth nursing in oncology and on integrative medicine; and 3) the tradition of integration of quality assessment with other types of research at St. Mary's.

In response to the desire of the Hospital Foundation to create two endowed Chairs, a meeting was held with Michèle Joannis, Executive Director, Development, Faculty of Medicine at McGill University, in order to discuss strategies to finance the endowments. Current plans are to create a Chair in Family and Community Medicine Research, and a Chair in Community Cancer Care. Proposed strategies for financing the endowments are currently under review.

A draft business plan for research development at SMHC over the next 5 years was prepared by the Administrative Coordinator of the DCECS, with assistance from the Vice President of Professional Services, as well as the Head of the DCECS. The business plan describes the current status of research at St. Mary's; a vision for research development in the next 5 years; and an action plan to attain planned objectives, and to meet the condition set out by the MSSS in order to maintain *CHAU* status. The draft business plan was presented to the Director General and CEO of St. Mary's, the Director of the Research Institute of the McGill University Health Center, and the Associate Director, Clinical Research at the RI MUHC, in February of 2009. In addition, there were discussions of hiring a Director to lead research development efforts for the next 5 years.

APPENDICES

APPENDIX A

**ASSOCIATE MEMBERSHIP
DEPARTMENT OF CLINICAL EPIDEMIOLOGY AND COMMUNITY STUDIES
April 1, 2008 – March 31, 2009**

Member	Title, Department	Start term	End term
CPDP members			
Bruce Brown, MD, CM, MPH	Vice President, Professional Services	January 1, 2007	December 31, 2009
Martin Cole, MD, FRCP(C)	Geriatric Psychiatrist, Mental Health	January 1, 2007	December 31, 2009
Michel Élie, MD	Geriatric Psychiatrist, Mental Health	October 1, 2008	September 30, 2011
Laura Haiek, MD, MSc	Family Physician, Family Medicine	January 1, 2007	December 31, 2009
Michael Libman, MD, CM	Microbiologist, Infectious Diseases	April 1, 2007	March 31, 2010
Ellen Rosenberg, MD	Family Physician, Family Medicine	November 1, 2008	December 31, 2011
Mark Yaffe, MD, CM, MCISc	Family Physician, Family Medicine	January 1, 2007	December 31, 2009
Non-CPDP members			
Antonia Arnaert, RN, MPA, PhD	Assistant Professor, McGill School of Nursing	April 1, 2007	March 31, 2010
Antonio Ciampi, PhD	Consultant Biostatistician, DCECS	April 1, 2008	March 31, 2010
David Parry	Student, Faculty of Law, McGill University	January 1, 2009	December 31, 2010
Maida Sewitch, PhD	Consultant Epidemiologist, DCECS	January 24, 2008	January 23, 2010

CPDP = Council of Physicians, Dentists, and Pharmacists
DCECS = Department of Clinical Epidemiology and Community Studies

APPENDIX B

**ACTIVE RESEARCH PROTOCOLS AT SMHC
April 1, 2008 – March 31, 2009**

Please note: an “active research protocol” is defined as a protocol that was active at any point during the period April 1, 2008 to March 31, 2009 (i.e., the protocol received Full Institutional Approval either before or during the period and had not been terminated or withdrawn before April 1, 2008).

No.	Project ID	Principal Investigator	Site Investigator*	Project / Title	Approval Date	Funding Source	Funding Amount	Funding Administrator
1.	01-03	Yale	Eappen	Action to control cardio vascular risk in diabetes (ACCORD)	07-Mar-01	NIH	\$75,798	McGill
2.	01-18	Siemiatycki	McCusker	Cell phone use and tumours : the Montreal component	25-Jan-02	CIHR	\$504, 891	INRS
3.	01-20	Solymoss	N/Appl - SMHC	Thrombophilia in pregnancy prophylaxis study (TIPPS)	07-Oct-02	HSF	\$1,100/pt	SMHC
4.	02-06	Franco	Pavilanis	Efficacy trial of HPV vs pap testing for screening for cervical cancer	30-Jul-02	CIHR	\$1,100,000	McGill
5.	03-08	Franco	Brassard	Pap cytology screening failure: Influences of the patients, physician and laboratory	14-May-03	CIHR	\$77,236	McGill
6.	03-22	Solymoss	N/Appl - SMHC	Stocking and COX-II inhibitors to prevent post-thrombotic syndrome: the SOX trial	19-Aug-04	CIHR	\$37,550	SMHC
7.	04-17	Sewitch	N/Appl - SMHC	Adhering to colorectal cancer screening guidelines	25-Oct-04	FRSQ	\$257,907	MUHC
8.	04-23	Sewitch	N/Appl - SMHC	A pilot study of burdens, activities, and services use of persons providing assistance to chronically depressed seniors	01-Dec-04	FRSQ	\$10,000	MUHC
9.	04-24	Foulkes	Anderson	Searching for prognostic signature in BRCA-1 related hereditary breast cancer: a pilot project using tissue array	06-Jun-05	SGK	\$177,202	LDI-JGH
10.	04-25	Foulkes	Anderson	Somatic & mitochondrial mutations in hereditary & sporadic breast cancer	06-Jun-05	NCIC	\$44,000	LDI-JGH
11.	04-26	Foulkes	Anderson	Creating cell lines from breast and ovarian tissue from women with established BRCA1, BRCA2, or PALB2 mutation status	06-Jun-05	FRSQ	\$60,000	LDI-JGH
12.	04-32	Boss	Élie	Impact of antipsychotic medications on course and outcome of delirium	30-May-05	SMHC	\$3,640	SMHC
13.	04-34	Gagnon	N/Appl - CR	Patterns of care during the last six months of life of patients dying of cancer	17-Dec-04	N/Appl - F	N/Appl - F	N/Appl - F

APPENDIX B (CONT'D)

ACTIVE RESEARCH PROTOCOLS AT SMHC (CONT'D)

April 1, 2008 – March 31, 2009

No.	Project ID	Principal Investigator	Site Investigator*	Project / Title	Approval Date	Funding Source	Funding Amount	Funding Administrator
14.	05-09	McCusker	N/Appl - SMHC	Delirium in long term care settings: Occurrence, modifiable risk factors, and outcomes	15-Jul-05	CIHR	\$325,812	SMHC
15.	05-22	Gagnon	Rosenberg	The childbearing health and related service needs of newcomers (CHARSNN)	13-Feb-06	CIHR	\$2,079,618	McGill
16.	05-23	Goldberg	Prchal	Gene-environment interactions in postmenopausal breast cancer: a case-control study	30-Mar-06	QBCF	\$1,500,000	McGill
17.	05-26	Henry	Brizard	Mood and cognitive functioning in late pregnancy and early postpartum: comparing breastfeeding and non breast-feeding women	27-Jan-06	CIHR	\$100,000	MUHC
18.	06-03	Sewitch	N/Appl - SMHC	Complementary and alternative medicine use at St. Mary's Hospital Center - a five year plan	26-Apr-06	SMHC	\$330,000	SMHC
19.	06-08	McCusker	N/Appl - SMHC	Delirium in nursing home patients with severe cognitive impairment (Alzheimer Society of Canada)	14-Aug-06	ASC	\$114,041	MUHC
20.	06-09	Sewitch	N/Appl - SMHC	Development of a method to differentiate screening from surveillance, diagnostic and confirmatory colonoscopy	31-Jul-06	NCIC	\$144,000	McGill
21.	06-11	Labreche	N/Appl - CR	Validation du processus diagnostique du mésothéliome de la plèvre	04-Dec-06	N/Appl - F	N/Appl - F	N/Appl - F
22.	06-12	Yale	Eappen	Intensive glycemic control and skeletal health study (ACCORD-BONE) - Ancillary study to the ACCORD trial	08-Sep-06	NIH	\$7,049	McGill
23.	06-13	Solymoss	N/Appl - SMHC	Study of dabigatran etexilate compared to Warfarin for 6 month treatment of acute symptomatic venous thromboembolism	19-Jul-06	Boehringer	\$5,000/pt	SMHC / MUHC
24.	06-18	Sabourin	McConnell	Creutzfeldt-Jakob disease surveillance system in Canada (CJD-SS)	12-Apr-07	PHAC	N/A	PHAC
25.	06-20	Balicki	Keyserlingk	Preliminary study in breast stem cell characterization	11-Jan-07	CIHR	\$346,358	MUHC

APPENDIX B (CONT'D)

ACTIVE RESEARCH PROTOCOLS AT SMHC (CONT'D)

April 1, 2008 – March 31, 2009

No.	Project ID	Principal Investigator	Site Investigator*	Project / Title	Approval Date	Funding Source	Funding Amount	Funding Administrator
26.	06-24	Cohen	N/Appl - CR	Molecular signatures of lung cancer and clinical correlation	14-Dec-06	N/Appl - F	N/Appl - F	N/Appl - F
27.	07-01	Masella	N/Appl - SMHC	Effects of Snozelen-based sensory stimulation intervention on the mood and behaviour of SMH patients in LTC & psychiatry	13-Nov-07	SMHC Int. Grant	\$5,000	SMHC
28.	07-02	Somera	N/Appl - SMHC	Women's experience of skin-to-skin contact with their infant following a cesarean section	04-Dec-07	SMHC Int. Grant	\$5,000	SMHC
29.	07-03	Faria	N/Appl - SMHC	Patient empowerment: Development of assessment scale at St. Mary's Hospital	24-Oct-07	SMHC Int. Grant	\$5,000	SMHC
30.	07-05	Solymoss	N/Appl - SMHC	Efficacy and safety of oral dabigatran etexilate compared to Warfarin to prevent venous thromboembolism - REMEDY	11-Dec-07	Boehringer	\$7,800/pt	SMHC
31.	07-06	Haiek	N/Appl - SMHC	L'Initiative des amis des bébés. Niveau d'implantation dans les établissements du Québec	04-Jun-07	MSSS	\$14,500	SMHC
32.	07-07	Poissant	Kisilevsky	Development of integrated information tools for the optimization of health service delivery to the stroke population	18-Jun-07	CIHR	\$49,815	CRIR / IRM
33.	07-08	Bogaty	N/Appl - CR	Évaluation sur le terrain du traitement de l'infarctus aigu du myocarde avec élévation du segment ST	19-Mar-07	N/Appl - F	N/Appl - F	N/Appl - F
34.	07-09	McCusker	N/Appl - SMHC	GIRU - AXE personnes âgées	17-May-07	GIRU	\$44,149	SMHC
35.	07-10	Piat	Hidalgo	Housing and recovery from serious mental illness: consumer and service provider perspectives	26-Jun-07	CIHR	\$333,959	DHRC
36.	07-12	Yale	Eappen	Ancillary eye study of ACCORD	29-Oct-07	NIH	\$63,000	McGill
37.	07-13	Sewitch	N/Appl - SMHC	Attitudes of health care professionals towards complementary and alternative medicine	11-May-07	SMHC Foundation	\$330,000	SMHC
38.	07-14	McCusker	N/Appl - SMHC	A population based study of emergency department utilization	18-Jun-07	FRSQ	\$270,000	McGill
39.	07-15	Loyer	N/Appl - CR	Accès aux fichiers nominatifs de la clientèle d'Urgences-santé transporté en établissement	03-May-07	N/Appl - F	N/Appl - F	N/Appl - F

APPENDIX B (CONT'D)

ACTIVE RESEARCH PROTOCOLS AT SMHC (CONT'D)
April 1, 2008 – March 31, 2009

No.	Project ID	Principal Investigator	Site Investigator*	Project / Title	Approval Date	Funding Source	Funding Amount	Funding Administrator
40.	07-17	Duarte-Franco	Farag	Prevalence of the HPV genotypes in archived specimens and risk factors of anal cancer reported in Quebec (1995-2005)	31-Jul-08	Merck Frosst	\$134,440	INSPQ
41.	07-18	Dawes	Pavlanis	CAMBO trial: Conventional versus automated measurement of blood pressure in the office	10-Sep-07	OHSF	\$225,002	McGill
42.	07-19	Eid	N/Appl - SMHC	Surveillance of access-related infections in urban, rural, and First Nations populations having home and outpt dialysis	25-Jul-07	N/Appl - F	N/Appl - F	N/Appl - F
43.	07-20	Luo / Nuyt	Girard	Oxidative (pre-natal) stress, fetal growth and early indicators of programming of metabolic and cardiovascular disorders	31-Jul-08	CIHR	\$455,538	CHUSJ
44.	07-21	Zappavigna	N/Appl - SMHC	Nursing student survey on clinical placements (Phase 1) - Quality assessment project	20-Sep-07	N/Appl - F	N/Appl - F	N/Appl - F
45.	07-22	Arnaert	N/Appl - SMHC	The development and evaluation of a tele-homecare model for palliative patients and their families	22-Apr-08	SMHC Foundation	\$250,000	SMH
46.	07-24	Corbeil	N/Appl - SMHC	A collaborative approach to adapting spaces in the inpatient psychiatric ward at SMH for patient/staff well being	22-Nov-07	SSHRC	N/Appl	N/Appl
47.	07-27	Chaillet	Hemmings	Qualité des soins, gestion du risqué obstétrical et du monde d'accouchement au Québec (QUARISMA)	25-Jun-08	CIHR	\$5,552,112	CHUSJ
48.	08-01	Guarnieri	N/Appl - SMHC	Assessment of the 2007 FMC influenza campaign mega clinics and the patient influenza/pneumivax form - Quality assessment project	14-Jan-08	N/Appl - F	N/Appl - F	N/Appl - F
49.	08-02	Solymoss	N/Appl - SMHC	A phase III, randomized, parallel group efficacy superiority study in hospitalized medically ill patients comparing rivaroxaban with enoxaparin	27-Nov-08	Bayer	\$10,667/pt	SMHC
50.	08-03	Poissant,Segal	Sorge	Wireless health care: Implementation and application, minimization of medication errors in a Quebec hospital	31-Mar-08	Prompt Que.	\$420,000	McGill
51.	08-04	Yaffe	N/Appl - SMHC	Improving seniors awareness of elder abuse through the self-administration of the Elder Abuse Suspicion Index	05-Dec-08	HRSDC	\$17, 754	SMHC
52.	08-05	Covell	Bambonye	Relationship of nursing intellectual capital to the quality of	28-Apr-08	NHSRU	\$3,596	U of T
53.	08-06	Menzies	N/Appl -CR	Understanding the keys to tuberculosis: from exposure to infection and from infection to disease	03-Mar-08	CIHR	unknown	MUHC
54.	08-07	Saoud	Rosenberg	Communication between health care professionals and pregnant women through a professional or family member interpreter	02-Jun-08	MSSS	\$5,000	McGill

APPENDIX B (CONT'D)

ACTIVE RESEARCH PROTOCOLS AT SMHC (CONT'D)
April 1, 2008 – March 31, 2009

No.	Project ID	Principal Investigator	Site Investigator*	Project / Title	Approval Date	Funding Source	Funding Amount	Funding Administrator
55.	08-08	McCusker	N/Appl - SMHC	Requête web opératoire	20-May-08	MSSS	\$15,860	SMHC
56.	08-09	Dubois	Bambonye	Les modèles d'organisation et d'utilisation des ressources infirmières et leur impact sur les résultats des soins	01-Aug-08	CIHR	\$125,000	U de MTL
57.	08-10	Shir	Anderson	Soy-rich diet for preventing chronic pain after breast cancer surgery	26-Jun-08	NIH	\$250,000	U de MTL
58.	08-11	Arnaert	McCusker	Exploring attitudes of "infirmières pivot en oncologie" on home telecare for delivering nursing care to patients with cancer	27-Jun-08	SMHC Foundation	\$250,000	SMHC
59.	08-12	D'Almeida	Prchal	Tele-homecare for patients with cancer and their family caregivers: P1: Environmental scan and needs assessment (perceptions)	27-Jun-08	N/Appl - F	N/Appl - F	N/Appl - F
60.	08-13	Doyle	Prchal	Home tele-nursing care: Perception of elderly outpatients with breast cancer and their family caregivers	27-Jun-08	N/Appl - F	N/Appl - F	N/Appl - F
61.	08-14	Sewitch	N/Appl - SMHC	Use of complementary and alternative medicine in cancer patients	23-Jun-08	SMHC Int. Grant	\$5,000	SMHC
62.	08-15	Rahme	Dimentberg	Risk-benefit ratio of extended thromboprophylaxis to prevent VTE among patients with hip or knee replacement: Database study	25-Mar-09	CIHR	unknown	unknown
63.	08-16	Arnaert	N/Appl - SMHC	Tele-homecare for pts with cancer and their family caregivers: Phase 1: Environmental scan and needs assessment (nurses)	27-Jun-08	SMHC Foundation	\$250,000	SMHC
64.	08-18	Lacasse	N/Appl -CR	Analyse des interventions faites auprès des patientes adultes intoxiqués par les bloqueurs des canaux calciques	12-Aug-08	N/Appl - F	N/Appl - F	N/Appl - F
65.	08-19	Barkun	Gaetano	Management of Canadian. Patients with Non Variceal Upper Gastrointestinal Bleeding. A national cluster randomized trial	13-Jan-09	CIHR	\$11,212	SMHC
66.	08-20	McCusker	N/Appl - SMHC	Implementation of chronic care management for late life depression in primary care.	28-Oct-08	CIHR	\$20,000	SMHC
67.	08-21	Armutlu	N/Appl - SMHC	Survey of interprofessional practice	10-Sep-08	N/Appl - F	N/Appl - F	N/Appl - F
68.	08-22	Fisher	Solymoss	A multinational, multicenter, randomized, double-blind study comparing the efficacy and safety of AVE5026 with enoxaparin for the prevention of venous thromboembolism in patients undergoing elective total hip replacement surgery.	29-Nov-08	Sanofi	\$8,684/pt	SMHC

APPENDIX B (CONT'D)

ACTIVE RESEARCH PROTOCOLS AT SMHC (CONT'D)

April 1, 2008 – March 31, 2009

No.	Project ID	Principal Investigator	Site Investigator*	Project / Title	Approval Date	Funding Source	Funding Amount	Funding Administrator
69.	08-23	McCusker	N/Appl - SMHC	ISAR/SEISAR Implementation Support	28-Oct-08	NBGH	\$6,000	SMHC
70.	08-24	Cole	N/Appl - SMHC	Delirium in long-term care settings-statistical analysis	27-Nov-08	GL	\$10,000	SMHC
71.	08-25	Blais	N/Appl- CR	Risk of stillbirth & perinatal death associated with the use of ICS for asthma during pregnancy	23-Sep-08	N/Appl - F	N/Appl - F	N/Appl - F
72.	08-26	Soulierers	Langleben	An open-label, multi-center, expanded access study of RAD001 in patients with metastatic carcinoma of the kidney who have progressed despite vascular endothelial growth factor receptor tyrosine kinase inhibitor therapy	22-Oct-08	Novartis	unknown	CHUM
73.	08-27	Major	N/Appl - CR	Un diagnostic de cancer est présumé suite à une mammographie de dépistage normale ou anormale	18-Aug-08	N/Appl - F	N/Appl - F	N/Appl - F
74.	08-29	Arnaert	N/Appl - SMHC	Development & evaluation of a home tele-care platform for patients with cancer and their family caregivers	11-Nov-08	SMHC Foundation	\$250,000	SMHC
75.	08-30	Hemmings	N/Appl - SMHC	Randomized controlled trial comparing the instillation of intrauterine versus placebo during endometrial ablation by thermachoice III as outpatient procedure	2-Jun-09	N/Appl - F	N/Appl - F	N/Appl - F
76.	08-31	Solymoss	N/Appl - SMHC	RECOVER II safety of oral dabigatran etexilate compared to warfarin	26-Mar-09	Boehringer	\$15,372.50/pt	SMHC
77.	08-32	Loo	N/Appl - SMHC	Human resource development committee survey on educational priorities and needs of APTS members and managers	26-Nov-08	N/Appl - F	N/Appl - F	N/Appl - F
78.	08-33	Solymoss	N/Appl - SMHC	Comparing the efficacy and safety of AVE5026 with enoxaparin for the prevention of venous thromboembolism in patients undergoing elective knee replacement surgery	10-Mar-09	Sanofi	\$86,840	SMHC
79.	08-34	Sideris	Langleben	A randomized, open-label, multi-center phase III study to evaluate the efficacy and safety of nilotinib versus imatinib in adult patients with unresectable or metastatic gastrointestinal stromal tumors (GIST)	25-Mar-09	Novartis	N/Appl	HMR
80.	08-35	Arnaert	N/Appl - SMHC	Home telecare for patients with rectal cancer with new stomas pilot testing a multidisciplinary intervention protocol.	06-Jan-09	SMHC Foundation	\$250,000	SMHC
81.	08-36	Lieberman	N/Appl - SMHC	Patient empowerment project	23-Dec-08	N/Appl - F	N/Appl - F	N/Appl - F

APPENDIX B (CONT'D)

ACTIVE RESEARCH PROTOCOLS AT SMHC (CONT'D)
April 1, 2008 – March 31, 2009

No.	Project ID	Principal Investigator	Site Investigator*	Project / Title	Approval Date	Funding Source	Funding Amount	Funding Administrator
82.	08-37	Somera	N/Appl - SMHC	Evaluation of the effective breastfeeding tool in the first two weeks postpartum	06-Jan-09	N/Appl - F	N/Appl - F	N/Appl - F
83.	08-38	Voyer	McCusker	Détection du delirium chez les aînés	14-Jan-09	FHEJ	\$4,288.69	SMHC
84.	09-01	Gelinas	Lamarre	An exploratory study: the evaluation of driving ability in adults with a mental condition	26-Feb-09	CIHR	\$5,000	LDI-JGH
85.	09-02	Cohen	Ahlgren	First-line Erlotinib followed by second-line Cisplatin & Gemcitabine versus first-line Cisplatin + Gemcitabine	29-Dec-08	Roche	unknown	McGill
86.	09-03	Zini	N/Appl - SMHC	Feasibility of sperm retrieval at time of radical orchiectomy for testis cancer	10-Feb-09	N/Appl - F	N/Appl - F	N/Appl - F
87.	09-04	Moffet	Dimentberg	Efficacité d'une approche d'intervention à domicile par téléadaptation suite à une arthroplasty du genou. Un essai clinique multicentrique	05-May-09	CIHR	\$1,011,172	U de Laval
88.	09-05	Sproule	N/Appl - SMHC	Evaluating patient-centered care in residency training	26-Feb-09	N/Appl - F	N/Appl - F	N/Appl - F
89.	09-06	Rappaport	N/Appl - SMHC	Perspectives of family medicine residents on home visits in the care of older adults	17-Feb-09	N/Appl - F	N/Appl - F	N/Appl - F
90.	09-08	Fraser	Girard	Determining the attitudes of women and maternity care providers toward birth: conflict, confusion, and concordance	05-May-09	CIHR	\$543,599	CWHCB
91.	09-12	Panasci	Langleben	Trial to evaluate the safety of two chemotherapy plus Trastuzumab regimens as adjuvant therapy in patients with HER2-positive breast cancer	26-Mar-09	Johnson	unknown	McGill
92.	09-13	Kavan	Langleben	Comparing the efficacy of Aflibercept vs placebo in patients treated with Gemcitabine for metastatic pancreatic cancer	26-Mar-09	Sanofi	unknown	McGill
93.	B-40	Ahlgren	N/Appl - SMHC	Trial of neoadjuvant therapy in patients with breast cancer evaluating adding capecitabine or gemcitabine to docetaxel	07-Nov-08	Roche	\$8,050	SMHC
94.	B-41	Ahlgren	N/Appl - SMHC	A randomized phase III trial of neoadjuvant therapy for patients with palpable and operable HER2-positive breast cancer comparing the combination of trastuzumab plus lapatinib to trastuzumab and to lapatinib administered with weekly paclitaxel following AC accompanied by correlative science studies to identify predictors of pathologic complete response	07-Nov-08	NSABP	\$5,200	SMHC

APPENDIX B (CONT'D)

ACTIVE RESEARCH PROTOCOLS AT SMHC (CONT'D)
April 1, 2008 – March 31, 2009

No.	Project ID	Principal Investigator	Site Investigator*	Project / Title	Approval Date	Funding Source	Funding Amount	Funding Administrator
95.	B-27	Ahlgren	N/AppI – SMHC	A randomized trial comparing preoperative doxorubicin (adriamycin) cyclophosphamide (AC) to preoperative AC followed by peroperative docetaxel (Taxotere) and to preoperative AC followed by postoperative docetaxel in patients with operable carcinoma of the breast	21-Oct-07	NCIC	\$2,500/pt	SMHC
96.	B-30	Ahlgren	N/AppI – SMHC	Comparing Adriamycin (A) & Cyclophosphamide © followed by Taxotere (AC-T) vs (AT) vs (ATC) in breast cancer	28-Apr-99	Sanofi	\$2,500/pt	SMHC
97.	B-31	Ahlgren	N/AppI – SMHC	Comparing Adriamycin & Cyclophosphamide followed by Taxol (AC-T) vs (AC-T) & Herceptin in node-+ve breast cancer	13-Sep-00	Genentech	\$1,565/pt	SMHC
98.	B-32	Ahlgren	N/AppI – SMHC	Comparing sentinel node resection to conventional axillary dissection in clinically node-negative breast cancer	15-Jul-99	NSABP	\$2,500/pt	SMHC
99.	B-34	Ahlgren	N/AppI – SMHC	Comparing Clodronate therapy vs placebo in early breast cancer treated with chemo &/or tamoxifen or no therapy	13-Jun-01	NSABP	\$2,765/pt	SMHC
100.	B-35	Ahlgren	N/AppI – SMHC	Comparing Anastrozole and Tamoxifen in postmenopausal ductal carcinoma with lumpectomy/radiation	09-Apr-03	NSABP	\$2,275/pt	SMHC
101.	B-36	Ahlgren	N/AppI – SMHC	Comparing 3 cycles 5-FU, Epirubicin & cyclophosph. (FEC) to 4 cycles of adriamycin & cyclophosphamide for breast cancer	19-Jul-04	Pharmacia	\$550/pt	SMHC
102.	B-38	Ahlgren	N/AppI – SMHC	A phase III adjuvant trial comparing three chemotherapy regiments in women with node positive breast cancer	08-Dec-04	Lilly, Amgen	\$2,500/pt	SMHC
103.	B-42	Ahlgren	N/AppI – SMHC	A clinical trial to determine the efficacy of five years of Letrozole compared to placebo following five years of an aromatase inhibitor (AI) or a combination of up to three years of Tamoxifen followed by an AI in prolonging disease-free survival in postmenopausal women with hormone receptor-positive cancer	16-Jan-08	Novartis	\$2,500/pt	SMHC

- A St. Mary's "Site Investigator" is appointed when Principal Investigator is from outside of SMHC.

N/AppI – SMHC = no Site Investigator since Principal Investigator is from SMHC
N/AppI – CR = no Site Investigator since project is a chart review

APPENDIX B (CONT'D)

Funding Source legend

Amgen	Amgen Inc.
ASC	Alzheimer Society of Canada
Bayer	Bayer Healthcare
Boehringer	Boehringer Ingelheim Canada
CIHR	Canadian Institutes of Health Research
FHEJ	Fondation des Hôpitaux Enfant Jésus
FRSQ	Fonds de la recherche en santé du Québec
Genentech	Genentech Inc.
GIRU	Groupe interuniversitaire de recherche sur les urgences
GL	Gustav Levinschi Foundation
HSF	Heart and Stroke Foundation
HRSDC	Human Resources and Skills Development Canada
Johnson	Johnson & Johnson Pharmaceutical Research
Lilly	Eli Lilly & Company
Merck Frosst	Merck Frosst Canada
MSSS	Ministère de la santé et des services sociaux
NCIC	National Cancer Institute of Canada
NHSRU	Nursing Health Services Research Unit
NIH	National Institutes of Health Research
NBGH	North Bay General Hospital
Novartis	Novartis Pharma Canada Inc.
NSABP	National Surgical Adjuvant Breast and Bowel Project
N/Appl – F	Project is unfunded
OHSF	Ontario Heart and Stroke Foundation
PHAC	Public Health Agency of Canada
Pharmacia	Pharmacia & Upjohn Company (a Pfizer company)
Prompt-Que.	Prompt Quebec
QBCF	Quebec Breast Cancer Fund
Roche	Roche Canada
Sanofi	Sanofi Aventis Canada
SGK	Susan G. Koman for the Cure
SMHC	St. Mary's Hospital Center
SMHC Foundation	St. Mary's Hospital Center Foundation
SMHC Int. Grant	St. Mary's Hospital Center Internal Grants Program
SSHRC	Social Sciences and Humanities Research Council

Funding Administrator Legend

CHUM	Centre Hospitalier Université de Montréal
CHUSJ	Centre hospitalier universitaire Sainte-Justine
CRIR	Centre de Recherche Interdisciplinaire en Réadaptation
CWHCB	Children & Women's Health Centre of British Columbia
DHRC	Douglas Hospital Research Center
HMR	Hôpital Maisonneuve Rosemont
INRS	Institut national de la recherche scientifique
INSPQ	Institut national de santé publique du Québec
IRM	Institut de réadaptation de Montréal
LDI-JGH	Lady Davis Institute-Jewish General Hospital
McGill	McGill University
MUHC	McGill University Health Center
N/Appl – F	Project is unfunded
PHAC	Public Health Agency of Canada
SMHC	St. Mary's Hospital Center
U de Laval	Université Laval
U de MTL	Université de Montréal
U of T	University of Toronto

APPENDIX C

RESEARCH PERSONNEL April 1, 2008 – March 31, 2009

Name	Position	Term of appointment	Funding*
Scientific staff			
Eric Belzile	Statistician	March 1996 –	D/R
Antonio Ciampi	Consultant Biostatistician	April 2004 –	D
Jane McCusker	Department Head	January 1993 -	D
Steven Sanche	Statistician	September 2008 –	D/R
Maida Sewitch	Consultant Epidemiologist	October 2002 –	D
Administrative staff			
Daniel Boulerice	Website Designer	March 2009 –	D
Zahoor Chughtai	Department Administrative Coordinator	February 2006 –	D
Melanie Dugas	Research Secretary	September 2005 –	D/R
Christine Gagné	Department Secretary	November 2002 –	D
Caroline Mailloux	Clerical Assistant	August 2005 –	D/R
Sarah Norton	Research Administrative Secretary	July 2008 –	D
Elizabeth Plomp	Research Administrative Secretary	January 2005 – July 2008	D
Research staff			
Dalila Benhaberou-Brun	Research Assistant	May 2008 –	R
Fadi Berzghal	Research Assistant	December 2007 –	R
Diane Chéné	Research Assistant	September 2004 –	D/R
Kristine Cooper	Research Assistant	February 2008 –	D/R
Zoumanan Debe	Project Coordinator	March 2009 –	R
Claire DesRosiers	Clinical Research Associate	January 2006 –	R
Alina Dyachenko	Statistician	October 2004 –	R
Tina Emond	Project Coordinator	July 2002 –	D/R
Catherine Galina	Principal Clinical Research Associate	January 2001 –	R
Christopher MacKinnon	Research Assistant	February 2007 –	R
Jenny Maisonneuve	Research Assistant	February 2009 –	R
Kathia Mendelew	Project Coordinator	November 2000 –	R
Pascal Nadeau	Research Assistant	May 2007 –	D/R
David Parry	Project Coordinator/REC Monitor	June 2005 –	D/R
Manon de Raad	Project Coordinator/Website Coordinator	January 2009 –	D/R
Deniz Sahin	Research Assistant	July 2007 –	D/R
Sandra Santella	Research Assistant	September 2008 –	D/R
Yue You	Research Assistant	July 2005 –	D/R
Lihong Zhong	Research Assistant	January 2008 –	D/R

* D = Department of Clinical Epidemiology and Community Studies

* R = Research grant(s)

* D/R = Mix of Department and research grant funding

APPENDIX D

**SCIENTIFIC RESEARCH COMMITTEE
April 1, 2008 – March 31, 2009**

Member	Title, Department	Start term	End term
Jane McCusker, MD, DrPH (Chair)	Head, DCECS	Indefinite	
Martin Cole, MD	Geriatric Psychiatrist, Mental Health	Sept. 2007	Aug. 31, 2010
Laura Haiek, MD	Family Physician, Family Medicine	Sept. 2007	Aug. 31, 2010
Makeda Semret, MD	Physician, Infectious Diseases and Medical Microbiology	Feb 1, 2008	Jan 31, 2011
Leonora Lalla, MD	Undergraduate Education Director, Family Medicine	Mar 12, 2008	Mar 11, 2011
Linda Bambonye	Vice President, Operations and Nursing	Sept. 1 2008	Aug. 31, 2011
Zahoor Chughtai, MSc, MBA	Department Administrative Coordinator, DCECS	Sept. 1 2008	Aug. 31, 2011
Bruce Brown, MD	Vice-President, Professional Services (Ex-Officio)	Indefinite	
Ian Pellat, CGA	Chief Accountant, SMHC (Ex-Officio)	Indefinite	

APPENDIX E

**RESEARCH ETHICS COMMITTEE
April 1, 2008 – March 31, 2009**

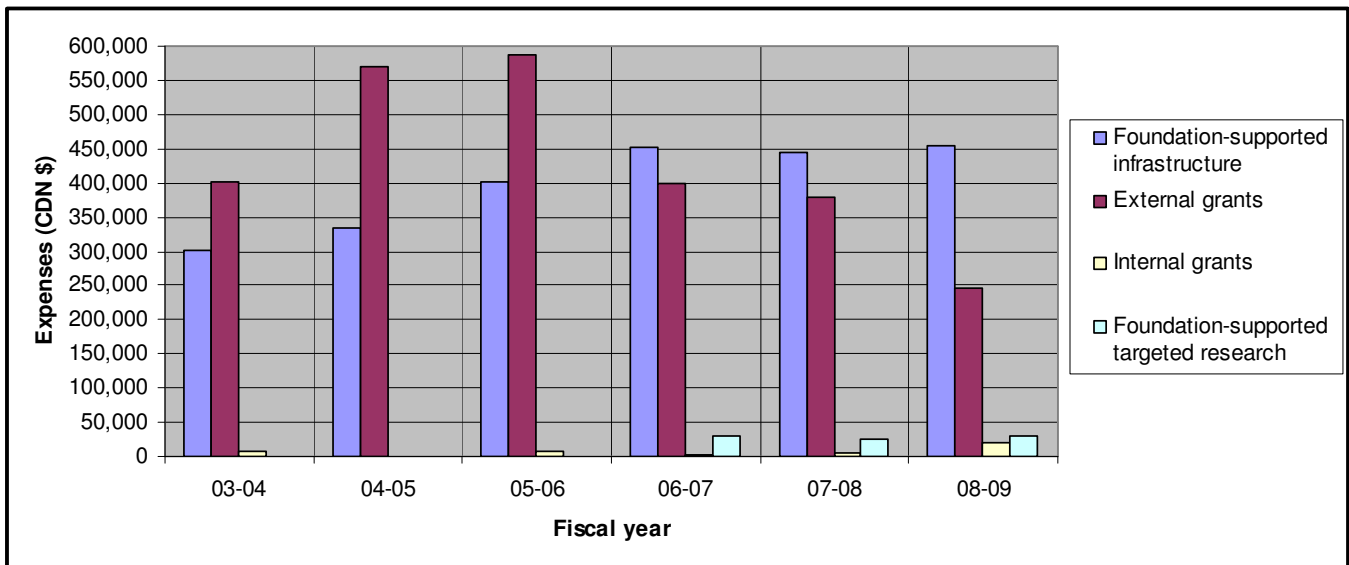
Member	Title (Department)	Start of term	End of term
Dr. Michael Bonnycastle	Chair (Medicine)	October 2007	September 2010
Dr. Martin Cole	Scientific member (Mental Health)	October 2007	September 2010
Anne Garland	Layperson	September 2005	August 2008
Dr. Zita Kruszewski	Ethicist (Ethics Services)	October 2008	September 2011
Father Roman Lahola	Member (Spiritual and Religious Care)	October 2008	September 2011
Dr. Susan Solymoss	Scientific member (Hematology/Oncology)	September 2005	September 2008
Marcela Hidalgo	Member (Social Services)	October 2008	October 2011
Eva Haber	Layperson	May 2006	September 2009
Elaine Doucette	Member (Nurse-educator)	October 2007	September 2010
Marion Dana	Lawyer	June 2008	May 2011

Ex-Officio Members	Title	Start of term	End of Term
Dr. Jane McCusker	Head, DCECS	Indefinite	
Ms. Marie Iskandar,	Chief, Pharmacy	As needed	

APPENDIX F

RESEARCH EXPENDITURES – PAST 5 YEARS
April 1, 2008 – March 31, 2009

	2003-04	2004-05	2005-06	2006-07	2007-08	2008-09
Foundation-supported infrastructure	301,372	334,709	402,662	452,597	445,367	455,525
External grants	401,298	570,895	586,547	398,132	377,852	247,065
Internal grants	8,207	342	8,566	1,922	5,297	20,300
Foundation-supported targeted research	0	0	0	29,231	25,120	30,286
Total expenses	710,877	905,946	997,775	881,882	853,636	753,176



APPENDIX G

SMHC PUBLICATIONS AND PRESENTATIONS Calendar year 2008

Names in bold are persons currently affiliated, at the time the work was conducted, with St. Mary's Hospital Center

Journal articles with peer-review

1. **Cole M**. Brief interventions to prevent depression in older subjects: a systematic review of feasibility, effectiveness and methodology. The American Journal of Geriatric Psychiatry, 2008;16:435-443.
2. **Cole M, McCusker J, Ciampi A, Belzile E**. Risk factors for major depression in older medical inpatients: a prospective study. American Journal of Geriatric Psychiatry, 2008;16(2):175-178.
3. **Cole M, McCusker J, Ciampi A, Belzile E**. The 6 and 12 month outcomes of older medical inpatients who recover from subsyndromal delirium. Journal of American Geriatrics Society, 2008;56(11):2093-2099.
4. **Cole M, McCusker J**, Marques S. Delirium in older patients: Clinical presentation and diagnosis. Revista Española de Geriatria y Gerontología, 2008;43(Supl. 3) 13-18.
5. **Cole M, McCusker J, Sewitch M, Ciampi A**, Dyachenko A. Health services use for mental health problems by community-living seniors with depression. International Psychogeriatrics, 2008;20(3):554-570.
6. **Cole M, You Y, McCusker J, Ciampi A, Belzile E**. The 6 and 12 month outcomes of older medical inpatients who recover from delirium. International Journal of Geriatric Psychiatry, 2008;23:301-307.
7. **Desjardins F, Cardinal L, Belzile E, McCusker J**. Reorganizing nursing work on surgical units: a time and motion study. Nursing Leadership, 2008;21(3):26-38.
8. **Dinh NMH**, Groleau, D. Traumatic Amputation: A Case of Laotian Indignation and Injustice. Culture, Medicine and Psychiatry, 2008;32:440-457.
9. **Han L, McCusker J, Cole M**, Abrahamowicz M, Capek R. 12-month cognitive outcomes of major and minor depression in older medical inpatients. American Journal of Geriatric Psychiatry, 2008;16(9):742-751.
10. Mayo NE, Nadeau L, Ahmed S, White C, Grad R, Huang A, **Yaffe MJ**, Wood-Dauphinee S. Bridging the gap: the effectiveness of teaming a stroke coordinator with patient's personal physician on the outcome of stroke. Age and Ageing, 2008;37:32-38.
11. **McCusker J, Cole M**, Latimer E, **Sewitch M, Ciampi A, Cepoiu M, Belzile E**. Recognition of depression in older medical inpatients discharged to ambulatory care settings: a longitudinal study. General Hospital Psychiatry, 2008;30(3):245-251.
12. **McMahon E**, Wada K, Dufresne A. Implementing fit testing for N95 filtering facepiece respirators: Practical information from a large cohort of hospital workers. American Journal of Infection Control, 2008;36:298-300.
13. **Rosenberg E**, Seller R, Leanza Y. Through interpreters' eyes: comparing roles of professional and family interpreters. Patient Education and Counseling, 2008;70:87-93.
14. **Ross J**. Discontinuation of lithium augmentation in geriatric patients with unipolar depression: a systematic review. The Canadian Journal of Psychiatry, 2008;53(2):117-12.
15. **Russillo B, Sewitch M, Cardinal L**, Brassard N. Comparing rates of trial of labour attempts, VBAC success, and fetal and maternal complications among family physicians and obstetricians. Journal of Obstetrics and Gynaecology Canada, 2008:123-128.

Journal articles with peer-review (cont'd)

16. **Sewitch M, Cole M, McCusker J, Ciampi A, Dyachenko A.** Medication use and non-adherence for mental health problems by community-living Canadian seniors with depression. Canadian Journal of Psychiatry, 2008;53(9):609-620.
17. Susser SR, **McCusker J, Belzile E.** Comorbidity information at an emergency visit: Self report versus administrative data. Journal of Clinical Epidemiology, 2008;61(5):511-515.
18. Voyer P, **Cole M, McCusker J,** St-Jacques S, Laplante J. Accuracy of nurse documentation of delirium symptoms in medical charts. International Journal of Nursing Practice, 2008;14:165-177.
19. **Yaffe MJ,** Jacobs BJ. Educating about family caregiving: Advocating More Family Physician Involvement. Canadian Family Physician, 2008;54:1359-1360.
20. **Yaffe MJ,** Orzeck P, Barylak L. Family physicians' perspectives on ambulatory care of individuals with dementia and their family caregivers: A qualitative study. Canadian Family Physician, 2008;54:1008-1015.
21. **Yaffe MJ,** Wolfson C, Weiss D, Lithwick M. Development and validation of a tool to assist physicians' identification of elder abuse: The Elder Abuse Suspicion Index (EASI ©). Journal of Elder Abuse and Neglect, 2008;20(3):276-300.
22. **Zini A, Boman JM, Belzile E, Ciampi A.** Sperm DNA damage is associated with an increased risk of pregnancy loss after IVF and ICSI: systematic review and meta-analysis. Human Reproduction, 2008;23(12):2663-2668.

Journal articles without peer review

1. **Armutlu M, Foley ML, Surette J, Belzile E, McCusker J.** Survey of nursing perceptions of medication administration practices, perceived sources of errors, and reporting behaviors. Healthcare Quarterly, 2008;11:58-65.
2. **McCusker J, Cole M, Yaffe M,** Cappeliez P, Dawes P, **Sewitch M, Ciampi A,** Latimer E. Project DIRECT: Pilot study of a collaborative intervention for depressed seniors. Canadian Journal of Community Mental Health, 2008;27(2):201-218.
3. Parke B, **McCusker J.** Consensus-based policy recommendations for geriatric emergency care. International Journal of Health Care Quality Assurance, 2008;21(4):385-395.
4. **Sewitch MJ, Cepoiu M, Rigillo N, Sproule D.** A literature review of health care professional attitudes toward complementary and alternative medicine. Complementary Health Practice Review, 2008;13(3):139-154.

Conference presentations

1. **Armutlu M, Yaffe MJ, Brizard MF, Allard M,** Still S. A survey of interprofessional attitudes and practices in a secondary care community hospital. 9th Annual Quality of Care Symposium: The Challenges of Interprofessional Care, St. Mary's Hospital and McGill Faculty of Medicine Centre for Continuing Medical Education, Montreal, November 19, 2008. (poster).
2. Groulx S, **Haiek L,** Lafrenière C, Viens C. Academic detailing to enhance breastfeeding counseling and Baby-Friendly Initiative compliance in a local services network in Quebec. Academy of Breastfeeding Medicine conference, Vienna, Austria, October 4, 2008
3. Groulx S, **Haiek L,** Lafrenière C, Viens C. Academic detailing to enhance breastfeeding counseling and Baby-Friendly Initiative compliance in a local services network in Quebec. 1st European Conference on the Kangaroo Mother Care and the 7th International Workshop on Kangaroo Mother Care. Uppsala, Sweden, October 6 to 11, 2008.

Conference presentations (cont'd)

4. Groulx S, **Haiek L**, Lafrenière C, Viens C. Comment vendre l'allaitement maternel à un RLS. Journées annuelles de santé publique 2008, Québec, Québec, Novembre 17-20, 2006.
5. **Haiek LN**, Rocheleau L. BFI Assessment Tool: a Quebec methodology to assess compliance with breastfeeding-related policies and practices in health care facilities. Academy of Breastfeeding Medicine conference, Vienna, Austria, October 4, 2008
6. **Haiek LN**, Rocheleau L. BFI Assessment Tool: a Quebec methodology to assess compliance with breastfeeding-related policies and practices in health care facilities. 1st European Conference on the Kangaroo Mother Care and the 7th International Workshop on Kangaroo Mother Care. Uppsala, Sweden, October 6 to 11, 2008.
7. **Haiek LN**, Rocheleau L. Monitoring timing, duration and quality of early skin-to-skin contact in the hospital setting. 7th International Workshop on Kangaroo Mother Care. Uppsala, Sweden, October 9, 2008.
8. King S, **Brenner K**, Liu A, Laplante D, Joobor R. Cortisol Response to a Psychosocial Stressor in Schizophrenia: Blunted, Delayed, or Normal? Society for Research in Psychopathology, Minneapolis, Minnesota, September 27, 2008.
9. **McCusker J**, Roberge D, Vadeboncoeur A, Poissant L, Larouche D, Verdon J. Services for seniors discharged to the community after an emergency department visit. Annual meeting Canadian Association for Health Services and Policy Research (CAHSPR), Gatineau, Quebec, May 26-28, 2008.
10. **Sewitch MJ**, **Yaffe M**, Dawes M, Snell L, Roper M, Zanelli P, **Pavilanis A**. Gender differences in adherence to colorectal cancer screening. 10th World Congress on Gastrointestinal Cancer, Barcelona, Spain, Annals of Oncology, 19(Suppl. 6):vi85, June 2008.
11. Voyer P, Richard S, Doucet L, **McCusker J**, Carmichael PH. Prevalence of delirium and subsyndromal delirium using different diagnostic criteria among demented long-term care residents. 61st Annual scientific meeting of the Gerontological Society of America, National Harbor, Maryland, November 2008.
12. Weiss D, Shrier I, **Yaffe MJ**, Wolfson C. Promoting physical activity in seniors; Can physicians play a role? Annual Scientific Meeting of the Canadian Geriatrics Society, Montreal, April 10-12, 2008.
13. Weiss D, **Yaffe MJ**, Wolfson C. Physical Activity in Seniors: Does Perception Match Reality? Canadian Public Health Association Annual Conference, Halifax, June 1-4, 2008.
14. **Yaffe MJ**. A means to optimize encounters between family doctors and family caregivers of seniors. 37th Annual Scientific and Educational Meeting of Canadian Association on Gerontology, London, Ontario, October 23-25, 2008.
15. **Yaffe MJ**. A reason, a role, and a means for physicians to help identify elder abuse. Plenary Address. Manitoba Elder Abuse Conference: Partnering towards the Prevention of Abuse of Older Adults. Winnipeg, Manitoba, October 27-28, 2008 (invited).
16. **Yaffe MJ**. The family physician-family caregiver encounter: Doctors' perceptions, challenges, attitudes, and needs. Lecture to Department of Social Ecology, University of Manitoba, Winnipeg, October 27, 2008 (invited).
17. **Yaffe MJ**. The Power of Countertransference. Stories in Family Medicine / Récits en médecine familiale. College of Family Physicians of Canada, 2008 (solicited). <http://cfpcstories.sydneyplus.com>.
18. **Yaffe MJ**, Lithwick M, Kalache A. Does international collaboration foster knowledge translation in the field of elder abuse? International Federation on Ageing 9th Global Conference on Ageing, Montreal, Sept 4-7, 2008.

Conference presentations (cont'd)

19. **Yaffe MJ**, Lithwick M, Wolfson C. Professional biases in elder abuse detection: Implications for a unified approach on interprofessional teams. 9th Annual Quality of Care Symposium: The Challenges of Interprofessional Care. St. Mary's Hospital and McGill Faculty of Medicine Centre for Continuing Medical Education. Montreal, November 19, 2008 (poster).
20. **Yaffe MJ**, Lithwick M, Wolfson C, Weiss D. A means to improve physician identification of elder abuse: The Elder Abuse Suspicion Index. 3rd World Elder Abuse Awareness Day. International Network for Prevention of Elder Abuse, Ottawa, June 16-17, 2008 (poster).
21. **Yaffe MJ**, Lithwick M, Wolfson C, Weiss D. A means to improve physician detection of elder abuse: The Elder Abuse Suspicion Index (EASI). 9th Annual Quality of Care Symposium: The Challenges of Interprofessional Care. St. Mary's Hospital and McGill Faculty of Medicine Centre for Continuing Medical Education, Montreal, November 19, 2008 (poster).

APPENDIX H

SNAPSHOT OF DCECS WEBSITE HOMEPAGE

http://www.smhc.qc.ca/Epidemiology/index.html



Centre hospitalier affilié universitaire
A University-Affiliated Hospital Center



McGill



Research at St. Mary's Hospital Center
Department of Clinical Epidemiology and Community Studies

[Français](#) | [Contact us](#)

About us
Research themes
Research review
Events
C.A.R.E. competition
Clinical tools
Publications
Careers

Research at St. Mary's Hospital Center is coordinated through the Department of Clinical Epidemiology and Community Studies where scientific staff provides consultation and support to Hospital staff on research and quality assessment projects. ([More...](#))

News

2009-10 C.A.R.E. competition is underway!

St. Mary's Hospital Center (SMHC) and Foundation are interested in supporting pilot projects that contribute towards the development of research at SMHC, and that result in an increased amount of external research funding received by the Hospital, and in peer-reviewed publications. Applications for pilot projects are invited in clinical epidemiology and health services research that are consistent with the research mission of SMHC. Each pilot project may cover a period of up to 1 year.

Up to **\$20,000** may be awarded for each project

Deadline for applications: **November 30, 2009**

[Click here for more information](#)

St. Mary's research team is awarded \$720,000 for depression research



Research SPOTLIGHT

Core activities of the Department are supported by:



ST. MARY'S HOSPITAL FOUNDATION

Related links

[St. Mary's Hospital Center](#)

[Department of Epidemiology, Biostatistics and Occupational Health, McGill University](#)

[Quality Assessment Unit](#)

Download  **Adobe Reader** for PDF files

APPENDIX I – ANNUAL RESEARCH CONSULTATION REPORT – April 1, 2008 – March 31, 2009

SERVICES PROVIDED FOR GRANT PROPOSALS						
Consultation #	Period of consultation	Grant applicant	Title of proposal	Service provider	Hours*	Outcome
FAM08-02	Sept 18, 08	Rosenberg, Ellen	Does addition of professional interpreters between family physicians and immigrants improve disease control?	Sewitch, Maida	Not available	Proposal submitted to Canadian Institutes of Health Research, but refused.
				McCusker, Jane	Not available	
				TOTAL	Not available	
SERVICES PROVIDED FOR MANUSCRIPT PREPARATION						
Consultation #	Period of consultation	Service provided for	Title of project	Service provider	Hours	Outcome
EPI07-02	Jun 20, 08 - Jul 21, 08	McCusker, Jane	Prognosis of major and minor depression	Belzile, Eric	4	Manuscript accepted in General Hospital Psychiatry
				Ciampi, Antonio	Not available	
OBS07-01	May 25, 08 - present	Hemmings, Robert	Effect of Black cohosh on postmenopausal vasomotor symptoms	Setia, Maninder	20	Article accepted by Journal of Alternative Therapies
				Ciampi, Antonio	Not available	
				McCusker, Jane	Not available	
				Sewitch, Maida	Not available	
PS07-03	Aug 6, 08	Elie, Michel	Characteristics of elderly hospitalized patients with delirium who are prescribed antipsychotics	Belzile, Eric	2	Manuscript accepted in Canadian Journal of Geriatrics
				Ciampi, Antonio	Not available	
PS07-04	May 10, 08	Cole, Martin	6 and 12 month outcomes of older medical inpatients who recovered from sub-syndromal delirium	Belzile, Eric	2	Manuscript published in Journal of the American Geriatric Society
				Ciampi, Antonio	Not available	
				McCusker, Jane	Not available	
PS07-05	Aug 8, 08 - Sept 4, 08	Boss, Ken	Antipsychotics and mortality among elderly with delirium	Belzile, Eric	3	Manuscript published in International Psychogeriatrics
				Ciampi, Antonio	Not available	
SUR08-01	May 10, 08 - May 31, 08	Zini, Armand	Sperm DNA damage on pregnancy (meta-analysis)	Belzile, Eric	5	Manuscript published in Human Reproduction
				TOTAL	36	

APPENDIX I – ANNUAL RESEARCH CONSULTATION REPORT – April 1, 2008 – March 31, 2009 (cont'd)

SERVICES PROVIDED FOR QUALITY ASSESSMENT PROJECTS						
Consultation #	Period of consultation	Service provided for	Title of project	Service provider	Hours	Outcome
ON08-03	Aug 13, 08	Farley, Justine	Family satisfaction with palliative care	McCusker, Jane	Not available	No outcome
QM08-01	June 25, 2008	Armutlu, Markirit	Survey of patient care teams	McCusker, Jane	Not available	Helped prepare survey and present results at Symposium
				Sewitch, Maida	Not available	
QM09-01	Jan 30, 09	Cardinal, Linda	Apache 2008	Bachilova, Sophia	54.5	Data entered for QA project (# 0708-011)
IC08-01 and IC09-01	Apr 8, 08 - Oct 16, 08	Haddad, Leila, Libman, Michael	MRSA in neonatal intensive care nursery	McCusker, Jane	Not available	QA report submitted
				Belzile, Eric	7	QA report submitted
			Case control study for MRSA	Belzile, Eric	36	
				McCusker, Jane	Not available	
				TOTAL	97.5	
SERVICES PROVIDED FOR OTHER REQUESTS						
EPI07-03	Apr 1, 08 - Apr 10, 08	Arnaert, Antonia	Development, evaluation of tele-homecare platform	Chughtai, Zahoor	14	Assisted in revising budget
				Belzile, Eric	3	Estimated cost of data analysis
				Rigillo, Nicole	30	Prepared protocol for ethics submission
PS08-08	September 12, 2008	Singh, Santoch	Depression in the elderly	Belzile, Eric	1	Assisted in presenting paper at Psychiatry journal club
ICU08-01	Jun 26, 08 - Jul 10, 08	Steinmetz, Peter	Nurses' identification of inferior vena cava with ultrasound	McCusker, Jane	Not available	Assisted in designing study
				Belzile, Eric	1	Performed sample size calculation
				TOTAL	49	
				GRAND TOTAL	182.5	

**Please note that hours worked on specific projects by senior consultants is not available. Therefore, total hours worked by consultants in 2008-09 is underestimated.*

APPENDIX I – ANNUAL RESEARCH CONSULTATION REPORT – April 1, 2008 – March 31, 2009 (cont'd)

FINANCIAL SUMMARY OF SERVICES PROVIDED		
Type of consultation	Number of consultations	Cost
Grant proposals	1	Not available
Manuscript preparation	6	\$1,168
Quality Assessment projects	4	\$2,773
Other	3	\$1,812
TOTAL	14	\$5,753
COST CENTERS CHARGED FOR SERVICES PROVIDED		
Cost center charged	Hours worked	Cost
DCECS cost center	85	\$2,980
QA unit cost center	92.5	\$2,773
TOTAL	182.5	\$5,753

APPENDIX J

DCECS RESEARCH SEMINARS
April 1, 2008 – March 31, 2009

Date	Title	Speaker
April 10, 2008	Research 'With' Rather Than 'On' Communities: A Preliminary Guide on How to Conduct a Participatory Research Project	<p>David Parry Research Assistant, Participatory Research at McGill, Dept of Family Medicine, McGill University Research Coordinator, Department of Clinical Epidemiology and Community Studies, St. Mary's Hospital</p>
April 24, 2008	Research on Herbal Medicines: Lessons from Cannabis	<p>Mark A. Ware, MBBS MRCP MSc Director of clinical research, MUHC Pain Clinic Assistant professor, Anesthesia and Family Medicine, McGill University</p>
May 15, 2008	Perspectives of Health Professionals at SMHC on Integrating Complementary and Alternative Medicine into Mainstream Health Education and Care	<p>Maida Sewitch, PhD Epidemiology Assistant Professor of Medicine, McGill University Associate Member, Department of Clinical Epidemiology and Community Studies, St. Mary's Hospital</p>
May 29, 2008	Profil de Pratique des Médecins de Famille en Santé Mentale Dans le Cadre des Réformes	<p>Marie-Josée Fleury, Ph.D. Professeur adjoint au Département de psychiatrie de l'Université McGill</p>
June 12, 2008	Does Palliative Care Have a Blind Spot for Delirium? Barriers to Researching and Improving the Management of Delirium	<p>Christine Sanderson, BA, BMBS, MPH, FRACP Staff Specialist in Palliative Medicine Royal North Shore Hospital, New South Wales Research Fellow, CareSearch, Palliative care knowledge network Flinders University of South Australia</p>
September 25, 2008	A New Look at the Prognosis of Delirium in Older Hospital Inpatients: The Importance of Recovery	<p>Martin Cole, MD, FRCPC Senior Psychiatrist, St. Mary's Hospital</p>

APPENDIX J (cont'd)

DCECS RESEARCH SEMINARS
April 1, 2008 – March 31, 2009 (cont'd)

Date	Title	Speaker
October 9, 2008	Modern Physics and the Healing Power of Intention: Can Quantum Mechanics explain Self-Healing, Distant-Healing and other Miracles?	<p>Christian Janicki, PhD Medical Physicist, Radiation Safety Manager McGill University Health Center</p>
October 23, 2008	Risk of Death with Antipsychotic Medications use in Elderly Patients with delirium: Results from a Nested case-control study	<p>Michel Elie, MD, FRCPC Psychiatrist, Department of Psychiatry, SMHC</p>
December 4, 2008	Use of Massage Therapy for Comfort and Symptom Management: How Current Knowledge has Informed a Program of Research	<p>Andréa Maria Laizner, R.N., Ph.D. Nursing Research Consultant, McGill University Health Centre, Assistant Professor, McGill University School of Nursing; Chercheure Associée, CHU Sainte-Justine</p>
January 15, 2009	Monitoring Compliance with Breastfeeding-Related Policies and Practices in Health Care Facilities of the Montérégie Region, Québec	<p>Laura N. Haiek, MD, MSc Direction de santé publique, Agence de la santé et des services sociaux de la Montérégie (Médecin conseil) St. Mary's Hospital, Department of Clinical Epidemiology and Community Studies (Associate Member) and Family Medicine Centre Department of Family Medicine, McGill University (Assistant Professor)</p>
February 5, 2009	La Pratique des Omnipraticiens: Influence des Contextes Organisationnel et Géographique	<p>Roxane Borgès Da Silva, PhD Candidate Université de Montréal Direction de Santé Publique de Montréal</p>
February 26, 2009	Patients' Assessment of Chronic Illness Care Across Primary Healthcare Organizational Models: Results from a Cohort Study	<p>Jean-Frédéric Levesque MD, PhD Chercheur régulier, CRCHUM, Médecin-conseil, INSPQ, Commissaire adjoint à l'appréciation et à l'analyse, Commissaire à la santé et au bien-être du Québec</p>

APPENDIX K**ANNUAL RESEARCH AND QUALITY OF CARE SYMPOSIUM PLANNING COMMITTEE
April 1, 2008 – March 31, 2009**

Member	Department	Start of term	End of term
Allard, Manon	Cancer Care	April 1, 2008	March 31, 2010
Armutlu, Markirit (Chair)	Quality & Risk Management	April 1, 2002	N/A
Brizard, Marie-France	Maternal Child Care	April 1, 2008	March 31, 2010
Chughtai, Zahoor	DCECS	April 1, 2008	March 31, 2010
Farley, Justine	Cancer Care	April 1, 2008	March 31, 2010
Morneault, Cindy	Spiritual and Religious Services	April 1, 2008	March 31, 2010
Perez, Liliana	Quality & Risk Management	April 1, 2008	N/A
Sewitch, Maida	DCECS	April 1, 2008	March 31, 2010
Still, Susan	Medical Evaluation Committee	April 1, 2008	March 31, 2010
Yaffe, Mark	Family Medicine	April 1, 2008	March 31, 2010



9th Annual Research and Quality of Care Symposium
The Challenges of Interprofessional Practice
Wednesday, November 19th, 2008

Program of Events

- 07:30 - 08:00 **Registration / Poster Viewing**
- 08:00 - 08:15 **Welcome & Opening Remarks** Markirit Armutlu, QRM Coordinator, Symposium chairperson
- SESSION 1** Moderator: **Maida Sewitch**, PhD, Research Consultant DCECS
 Introductions: **Cynda P. Heward**, CFRE, St.Mary's Hospital Foundation
- 08:15 – 09:00 **PARTNERSHIP FOR PATIENT & FAMILY CENTERED PRACTICE**
KEY NOTE SPEAKERS: **Margaret Purden**, RN, PhD, Assistant Director PhD Program at the School of Nursing, Faculty of Medicine, McGill University, Scientific Director of the Center for Nursing Research, **SMBD- Jewish General Hospital & David Fleischer**, MD, Associate Professor, Surgery, McGill University Faculty of Medicine. Surgeon General and co-director of the Cedars Breast Clinic, MUHC
 Moderator: **Manon Allard**, RN Program Manager Geriatrics
- 09:00 – 09:30 M.O.R.E. – Taking Care of Life - **Isabelle Girard MD & Guy Gagné MD**, Maternal-Child
- 09:30 – 10:00 Patient at the Center of the Cancer Care Team - **Anne Marie Leblanc**, IPO & **Annie Claude Nadeau**, Head Nurse
- 10:00 – 10:15 Coffee Break / Poster Viewing**
- SESSION 2** Moderator: **Justine Farley**, MD, Palliative Care
- 10:15 – 11:15 **INTERPROFESSIONAL APPROACHES TO SHARED DECISION MAKING IN PRIMARY CARE**
GUEST SPEAKER: **France Legaré MD, PhD, CCFP, FCFP**, Tier 2 Canada Research Chair in Implementation of Shared Decision Making in Primary Care, Associate Professor, Department of Family Medicine, Université Laval
 Moderator: **Marie France Brizard**, Program Manager Maternal Child
- 11:15 – 11:45 Dealing with "Turfism" - **Carole St.Pierre**, OT PPL & **Filomena Novello**, PT PTL
- 11:45 – 12:15 The Physician's Perspective on Team Work within the Critical Care Setting - **Steven Cape MD**, Critical care
- 12:15 – 13:15 LUNCH / Poster Viewing**
- SESSION 3** Moderator: **Cindy Mormeault**, Coordinator, Spiritual & Religious Services
- 13:15 – 14:00 **WORKING TOGETHER FOR PATIENT SAFETY – AN ICU SUCCESS STORY**
GUEST SPEAKERS: **Paule Bernier**, Pdt. Pdt, M.Sc.– Coordinator of the Nutrition Support Team, Chair CQI-ICU committee on prevention of ventilator-acquired pneumonia & **Denny Laporta MD** – Chief of the Department of Adult Critical Care, Medical Director of the hospital's Respiratory Therapy Service, Sir Mortimer B. Davis Jewish General Hospital, ICU – VAP Program
 Moderator: **Zahoor Chughtai**, Administrative Coordinator, DCECS
- 14:00 – 14:30 Is interprofessionalism Feasible in the Operating Room? - **Jocelyne Pepin**, Head Nurse & **Dawn Anderson MD**
- 14:30 – 15:00 The Patient & Family's perspective - **Susie Mintzberg**, SW-AMI Quebec & **Mike Santoro**, Pt representative.
- 15:00 – 15:15 Coffee Break / Poster Viewing**
- 15:15 – 15:30 **POSTER WINNERS** Presenter: **Jane McCusker**, MD, Director DCECS
- 15:30 – 16:15 **DEBATE ON THE MOTION: INTERPROFESSIONALISM IS ESSENTIAL TO ACHIEVE QUALITY CARE**
 Moderator: **Michael Bonnycastle**, MD, Geriatrician
- Debate Panelists:**
 For: **Yaël Acre**, MD Family Physician & **David Berubé**, Head Nurse, Mental Health
 Against: **Robert Weinman**, MD Family Physician & **Rosanna Zappavigna**, Program Manager FMC
- 16:15 – 16:30 **Wrap-up / Closing remarks** **Bruce Brown**, MD., Vice-President of Professional Services, SMHC



This event is approved for up to 7 credits by the Centre for Continuing Medical Education (CME). The Centre for CME, Faculty of Medicine, McGill University is fully accredited by the Committee on Accreditation of Canadian Medical Schools (CACMS), and through the CACMS is accredited to award AMA PRA category 1 credits.



9^e Symposium annuel sur la recherche et la qualité de soins
Les défis liés à la pratique interprofessionnelle
Le mercredi 19 novembre 2008

Programme

07:30 – 08 :00 **Inscription / Exposition d'affiches**

08:00 – 08:15 **Mots d'ouverture :** Markirit Armutlu, Coordinatrice GQR, présidente du symposium

1^{ère} SESSION

Modératrice: **Maida Sewitch**, PhD, conseillère en recherche, DÉCÉC
 Présentatrice : **Cinda P. Heward**, CFRE, Fondation de l'hôpital St. Mary

08:15 – 09:00 **PARTNERSHIP FOR PATIENT & FAMILY CENTERED PRACTICE**

CONFÉRENCIÈRE INVITÉE : **Margaret Purden**, Inf., PhD, Directrice adjointe, Programme de doctorat, École des sciences infirmières, Faculté de médecine, Université McGill ; directrice scientifique, Centre de recherche en sciences infirmières, Hôpital général juif-SMBD et **David Fleischer**, MD, Professeur associé, Chirurgie, Université McGill, Faculté de médecine. Chirurgien général et co-directeur de la Clinique Cedars du sein, CUSM.

Modératrice : **Manon Allard**, Gestionnaire de programme - gériatrie

09:00 – 09:30 **A.M.P.R.O.– La vie au premier plan** - Isabelle Girard M.D. et Guy-Paul Gagné M.D. Soins Mère-Enfant

09:30 – 10:00 **Le patient au cœur de l'équipe de cancérologie** - Anne-Marie Leblanc, Inf. et Annie-Claude Nadeau, inf.-chef

10:00 – 10:15 Pause santé / Exposition d'affiches

2^e SESSION

Modératrice: **Justine Farley**, MD, Soins palliatifs

10:15 – 11:15 **APPROCHES INTERPROFESSIONNELS POUR LA PRISE DE DECISION PARTAGEE EN SOINS PRIMAIRES.**

CONFÉRENCIÈRE INVITÉE: **France Legaré**, MD, PhD, CCFP, FCFP, Chaire de recherche du Canada (niveau 2) - Implantation de la prise de décision partagée dans les soins primaires ; professeure agrégée, Département de médecine familiale, Université Laval

Modératrice: **Marie-France Brizard**, gestionnaire de programme, soins mère-enfant

11:15 – 11:45 **Dealing with "Turfism"** - Carole St.Pierre, erg., PPL et Filomena Novello, pht. PTL

11:45 – 12: 15 **The Physician's Perspective on Team Work within the Critical Care Setting** - Steven Cape MD, Soins intensifs

12:15 – 13:15 Dîner / Exposition d'affiches

3^e SESSION

Modératrice: **Cindy Morneau**, Coordinatrice, Soins spirituels et religieux

13:15 – 14:00 **WORKING TOGETHER FOR PATIENT SAFETY – AN ICU SUCCESS STORY**

CONFÉRENCIERS INVITÉS : **Paule Bernier**, Dt.p., M.Sc., Coordinatrice de l'équipe de soutien nutritionnel; présidente du comité des SC-SI sur la prévention de la pneumonie sous ventilation assistée & **Denny Laporta** M.D., Chef du département des soins intensifs; directeur du service de pneumologie, Hôpital général Juif SMBD, programme SC-SI sur la prévention de la pneumonie sous ventilation assistée.

Modérateur: **Zahoor Chughtai**, Coordinateur administratif, DÉCÉC

14:00 – 14:30 **L'interprofessionalisme est-il possible à la salle d'opération?** - Jocelyne Pepin, Inf. chef, Dawn Anderson M.D.

14:30 – 15:00 **The Patient & Family's perspective** - Suzie Mintzberg, T.S. -AMI Québec et Mike Santoro, Représentant des patients

15 :00 – 15 :15 Pause santé/ Exposition d'affiches

15:15 – 15:30 **GAGNANTS DES RÉSUMÉS :** Présentatrice : **Jane McCusker**, M.D., Directrice du DÉCÉC

15:30 – 16:15 **DÉBAT: L'INTERPROFESSIONNALISME EST ESSENTIEL POUR ASSURER DES SOINS DE QUALITÉ**

Modérateur : **Michael Bonnycastle**, M.D., gériatre

Participants au débat :

Pour: **Yaël Acre**, M.D. Omnipraticien & **David Berubé**, Chef inf. Santé mentale

Contre: **Robert Weinman**, M.D. Omnipraticien & **Rosanna Zappavigna**, gestionnaire de programme, médecine familiale

16:15 – 16:30 **Mots de clôture :** **Bruce Brown**, M.D., vice-président, Services professionnels CHSM



Cette activité est accréditée pour 7 crédits par le Centre d'éducation médicale continue (EMC). Le centre d'EMC de la Faculté de médecine de l'Université McGill est autorisé par le Comité d'accréditation des facultés canadiennes de médecine (CAFCM) et par le (CAFCM) est accrédité pour accorder les crédits catégorie (1) AMA PRA.